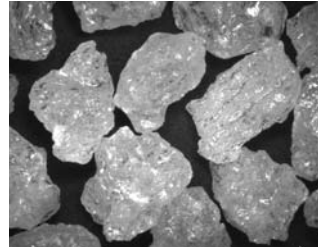


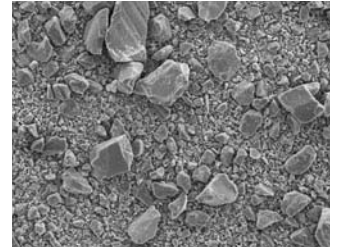
White Fused Alumina for Refractory NIKKEI RUNDUM G1

NIKKEI RUNDUM G1, with its high mechanical strength, hardness and chemical stability, is ideal for refractory bricks and castables which require abrasion and corrosion resistance.

NR is the fine-ground equivalent of G1.



3-1mm



NR325F

100µm

Typical Properties

	Specific Gravity	Bulk Density(Loose) (g/cm ³)	Bulk Density(Packed) (g/cm ³)	Color	Porosity (%)	Magnetic Substances (ppm)
G1 (3-1mm)	3.96	1.75	1.96	White	6.6	8
G1 (NR325F)	3.96	1.02	1.98	Whitesmoke	—	12

Grain Size	Chemical Composition					Grain Size Distribution			
	Al ₂ O ₃ (%)	Fe ₂ O ₃ (%)	SiO ₂ (%)	Na ₂ O (%)	H ₂ O (%)				
30-10	≥99.0	≤0.1	≤0.1	≤0.4		+30.0	30.0~10.0	-10	
	99.7	0.02	0.05	0.26	0.01	≤5		≤10	
5-3	≥99.0	≤0.1	≤0.1	≤0.4		0	95.8	4.2	
	99.7	0.01	0.05	0.22	0.01	+5.0	5.0~3.0	-3	
3-1	≥99.0	≤0.1	≤0.1	≤0.4		≤5		≤10	
	99.7	0.02	0.05	0.18	0.01	1.4	92.5	6.1	
1F	≥99.0	≤0.1	≤0.1	≤0.4		+3.0	3.0~1.0	-1	
	99.7	0.02	0.05	0.16		≤5		≤10	
0.3F	≥99.0	≤0.1	≤0.1	≤0.6		1.1	95.6	3.3	
	99.5	0.03	0.05	0.42	0.01	+1.0	1.0~0.5	0.5~0.212	-0.212
NR325F	≥99.0	≤0.2	≤0.2	≤0.4	≤0.3	≤5			
	99.7	0.03	0.05	0.19	0.11	1.5	55	36.8	6.7
						+0.3	0.3~0.075	-0.075	
						≤5			
						2.2	86.3	11.5	
						-0.045 (Wet)			
						≥95			
						97.8			

Upper: Standard Specifications (%)
Lower: Typical Values (%)

Upper: Sieve Mesh Size (mm)
Middle: Standard Specifications (%)
Lower: Typical Values (%)

* Other grain sizes are available upon request

Applications

- (1) Refractory bricks
- (2) Castables

Packing

- Flexible container bag (500kg and 1000kg)
Paper bag (25kg)